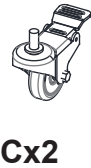
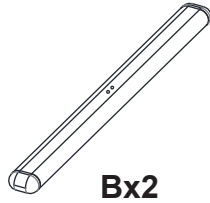
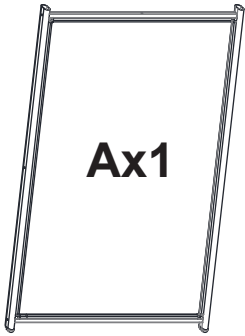


Parts List:

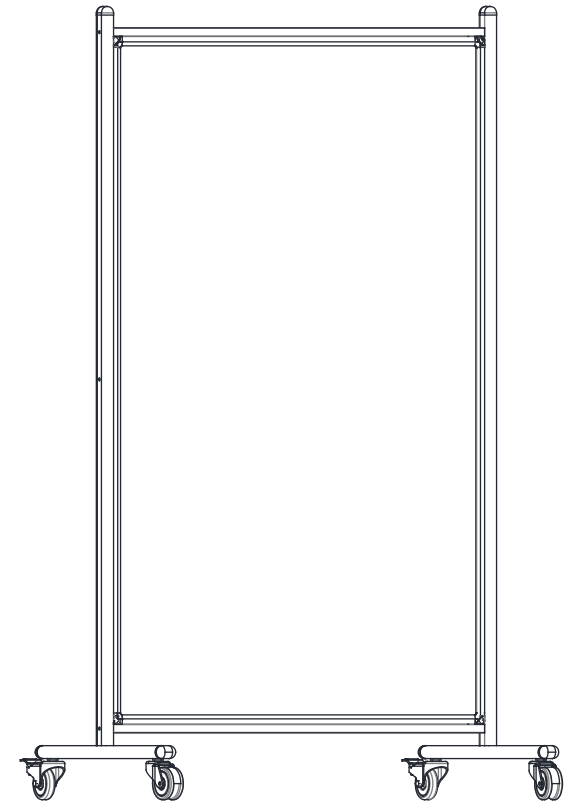
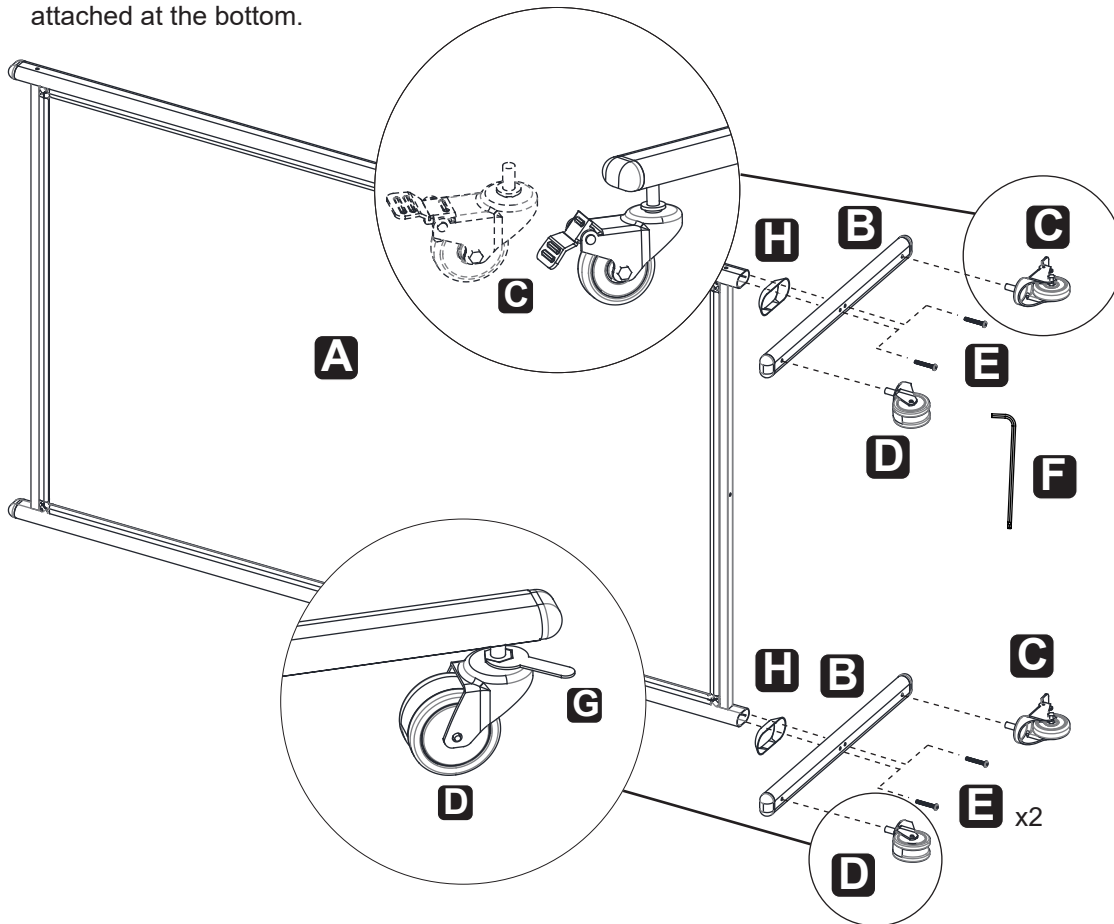


2 PEOPLE REQUIRED

STEP 1

Place the whiteboard (A) on a non-abrasive surface such as a carpet. Assemble Parts (H) and (B) with (A) by using 4 Screws (E) and Allen Key (F) as shown below. Screw on the locking casters (C) on one side at the bottom using the Wrench (G) provided. Assemble the other 2 casters (D) on another side the same way. Be sure all casters are securely attached at the bottom.

Carefully lift up the assembled whiteboard to its standing position. The assembly is finished.



Cleaning Tips: Clean the writing surface with a lint-free cloth and mild cleaning solution.